

Michaela 6th Dress Code

Male

- Formal Business Suit in a dark, conservative and understated colour/pattern
- Formal white shirt
- Formal tie
- Formal shoes in black, brown or navy, bearing no resemblance to trainers

Female

- Formal Business Suit (skirts must be at least to the knee, no stretchy lycra material or body-contouring styles)
- Formal Business Dress and jacket (Dress must have sleeves which cover at least the shoulder)
- Formal Blouse or shirt
- Formal shoes in black, brown or navy, and no more than 2 inches in heel height
- Girls wishing to wear the Islamic dress should wear a simple silhouette jilbab and a hijab in a plain, dark colour. Both garments should not be embellished. A formal business jacket will need to be worn.

Outerwear & Bags

- Dark blue/grey or black coat with no logo
- Dark blue/grey or black satchel bag with no logo
- Dark blue/grey or black hat, scarf and gloves with no logo

Jewellery & Make-up

- Students may wear make-up: light foundation, eyeliner/mascara, subtle lip colour or gloss.
- Students may wear one small stud in each ear, one understated necklace/pendant, one simple bracelet or wristwatch and one understated ring. Students may be required to remove these items for particular lessons where safety is a factor.

Hair & Henna

- Hairstyles must be neat, professional and appropriate for the workplace.
- Facial hair is permitted but must be kept neat and sensible.
- Henna is not permitted; students sporting henna will be sent home.

The following are not permitted:

- Brightly coloured suits;
- Casual style dresses such as those with a vest style top, very thin straps and strapless style top;
- Jumpers- with the exception of plain v neck jumpers under the blazer;
- Denim/Jeans trousers, shirts, blouses or skirts;
- Studs on trousers, skirts or shirts/blouses
- Casual trousers – combats, track suits, leggings;
- Casual tops – track suit, fleeces, T-shirts, hooded tops, vest tops;
- Shorts, cropped trousers, tight narrow legged trousers, trousers made of stretchy legging-type material;
- Sportswear;
- Very short skirts/revealing clothes;
- Trainers, pumps, canvas shoes, Vans, Kicker trainers or leisure shoes/pumps;
- Visible boots
- Unprofessional hairstyles, patterns or shapes cut into hair or eyebrows, and brightly coloured hair
- Henna
- Caps, bandanas, balaclavas or face coverings
- Overly conspicuous jewellery - large earrings, necklaces, large/multiple bracelets
- Coloured Shoe Laces
- Clothing made of sheer/transparent materials

Tattoos should not be visible. Visible body piercing is restricted to one small piercing on each ear. Bars, scaffolds and stretchers are not permitted.

Students will be sent home if they do not conform to the Dress Code. Parents/carers will be contacted on the first occasion a student is required to be sent home in relation to a dress code violation. In the event of any subsequent digression from the dress code, the student will be sent home to change and given a detention, but no contact will be made with the parent/carer.

It is beyond the scope of the policy to provide guidance on every eventuality. In the event of a query, the Headmistress will make the final decision. If a student regularly fails to comply with these guidelines, they will be dealt with according to the Michaela6th behaviour policy.

Examples of permitted and non-permitted clothing, hair, make-up and accessories.



Too bright



Too light



Too fancy



Too informal



Men's Shoes



Boat shoes



Too trainer-like



Too colourful



Ladies' Shoes



Too high



Too patterned/colourful



Skirts / Dresses



Too short/tight/revealing



Sleeveless/bodycontour



Tops/Blouses





Too sheer/revealing

Too short / cropped

Too low-cut

Reveals shoulders/strappy



Jewellery



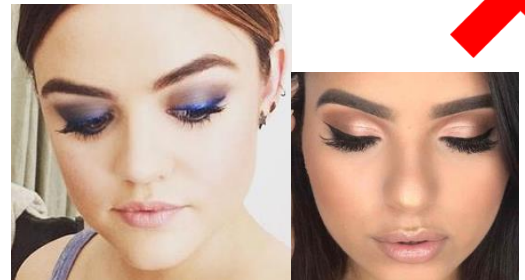
More than one

Too dangly

Too large



Make-up



Too much!

Too much!



Hair



Haircuts should be even across the head



High ponytails restrict pupil view

